

SPS 50 S HC

SPS 50 S HC



DESCRIZIONE

Portata massima 50 kg.
Inclinazione manuale e foro passante diam. 50 mm.
Ciclo automatico con sormonto regolabile e innesco saldatrice.



DESCRIPTION

Maximum load 50 kg,
manual tilt and 50 mm diam. hollow center.
Automatic cycle with adjustable over-weld,
welding power source start.



BESCHREIBUNG

Maximale Tragfähigkeit 50 kg,
Kippung manuell und Hohlwelle mit 50 mm Durchmesser.
Schweißstromquelle starten, verzögerter Tischstart.



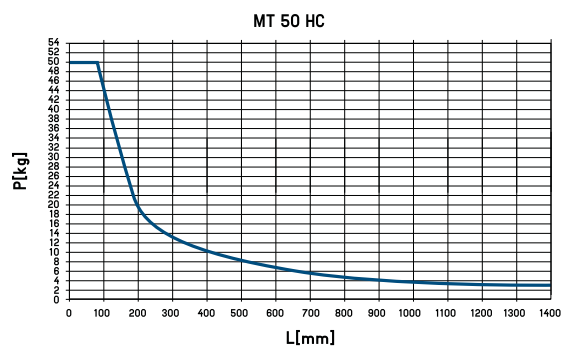
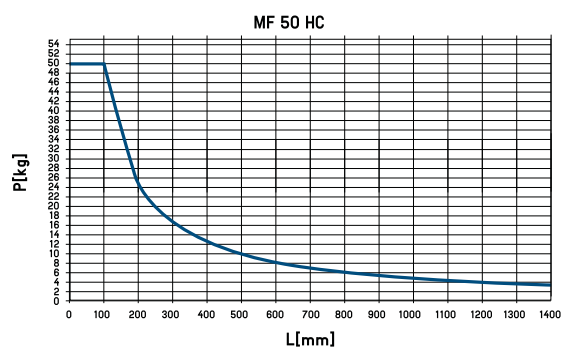
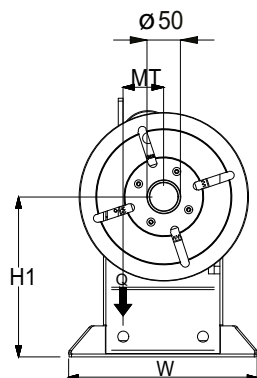
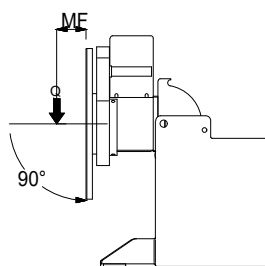
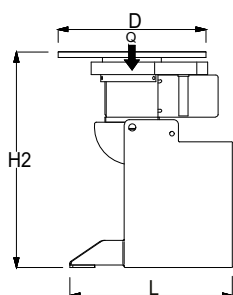
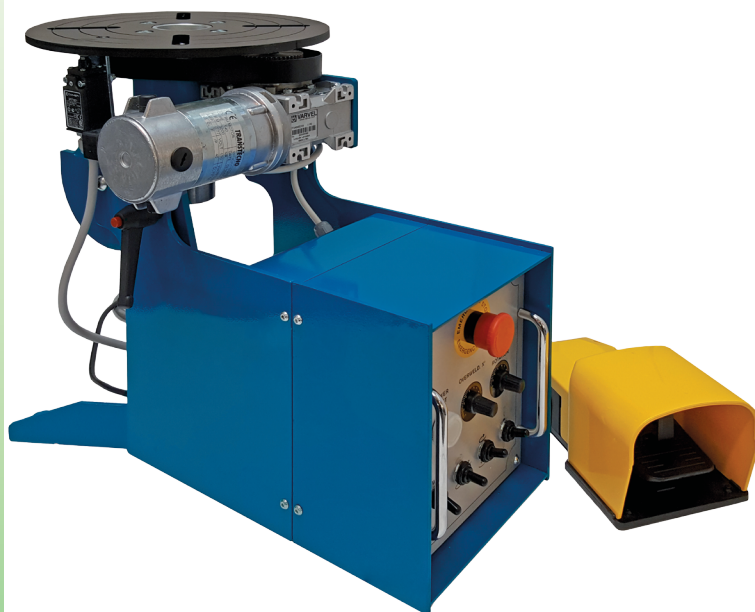
DESCRIPTION

Portée max 50 kg.
Inclinaison manuelle et trou centrale diam. 50 mm.
Cycle automatique avec recouvrement réglable
et commande simultanée du poste.



DESCRIPCIÓN

Capacidad máxima 50 kg.
Inclinación manual y agujero de paso diám. 50 mm.
Ciclo automático con solape regulable,
circuito cebado soldadura.



Tipo motore	Q kg	MT danm	MF danm	D mm	H1 mm	H2 mm	L mm	W mm	rpm	volt	volt	volt	kg
DC	50	4	5	300	275	435	360	480	1-10	1x220	24	220	30