

SPS POWER 120 I

SPS POWER 120 I



DESCRIZIONE

Portata massima 120 kg.
Inclinazione manuale.
Rotazione con motore a corrente alternata,
con inverter e riduttore.



DESCRIPTION

Maximum load 120 kg.
Manual tilt.
Slewing by AC motor with inverter and gearbox.



BESCHREIBUNG

Maximale Tragkraft 120 kg.
Kippung manuell.
Rotation mit AC Elektromotor mit Inverter
und Untersetzung.



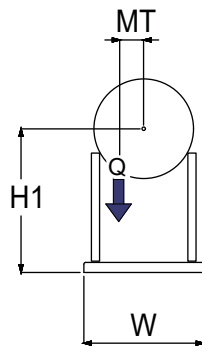
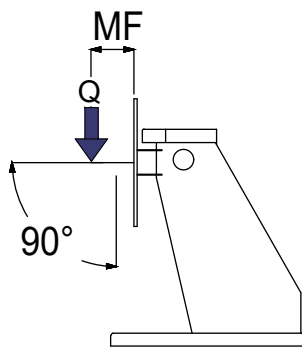
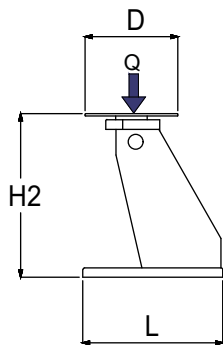
DESCRIPTION

Max portée 120 kg.
Inclinaison manuelle.
Rotation avec moteur à courant alterné,
avec inverter et réducteur.

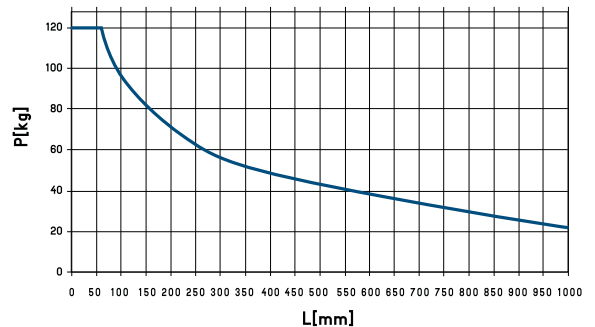


DESCRIPCIÓN

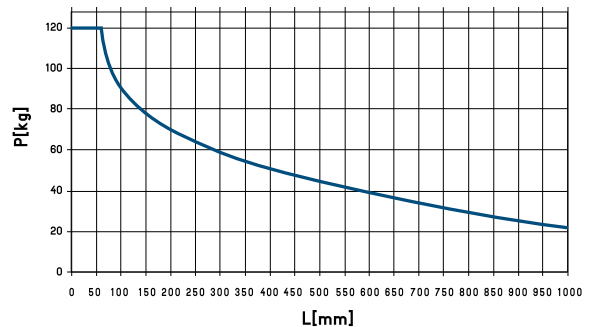
Carga máxima 120 kg.
Inclinación manual.
Rotación por motor de corriente alterna,
con inverter y reductor.



MF POWER 120



MT POWER 120



Tipo motore	L mm	W mm	H1 mm	H2 mm	D mm	volt	rpm	Portata / Load / Portee / Tragkraft / Capacidad		kg
								Horizontal kg	Vertical kg	
AC	750	523	600	800	400	230	0,6-6	120	60	60